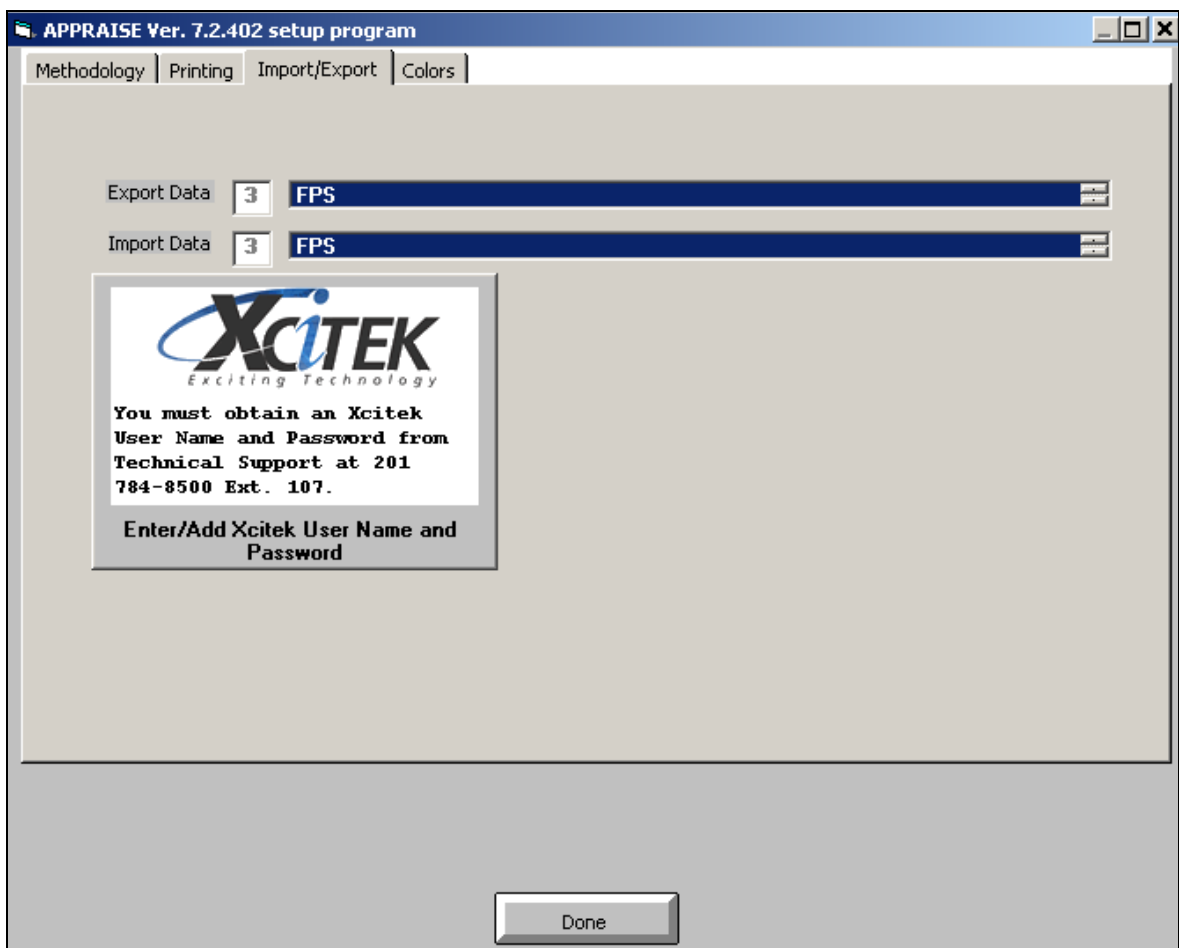


## Fast-Tax FPS Import Export

You can import securities and values, together with accrued income from Appraise. This procedure will import security descriptions, date of death values (but not alternate values), accrued interest to date of death and dividends of record prior to death. You can import alternate values through the FPS Securities Pricing function.

Configure APPRAISE to create the Export file:

Open APPRAISE and click on System Setup. Go to the Import/Export tab and select FPS for both import and export. Be sure to highlight the field in order to select it.



When finished click on the Done button.

Create a new Estate & Gift Tax portfolio. Enter CUSIPs™ and shares and then send the portfolio for pricing. From within the modify portfolio screen go to the File menu and select Export to FPS.

**APPRAISE Modify an Estates portfolio [SAMPLE ACCOUNT]**

File Switch Paste APPRAISE Plus

Created: 05/2004 Last Update: 09/09/2004 Last User: N/A Date of Death: Wed 12/10/2003

Contact Us Issue Research Switch to Alt Portfolio

Cusip	Shares/Par	Status
459200101	250.0000	Data
2001957505	100.0000	Data
3842035CT2	5,000.0000	Data
4002824100	300.0000	Data
5999912306	25,000.0000	User/Man

File menu options:

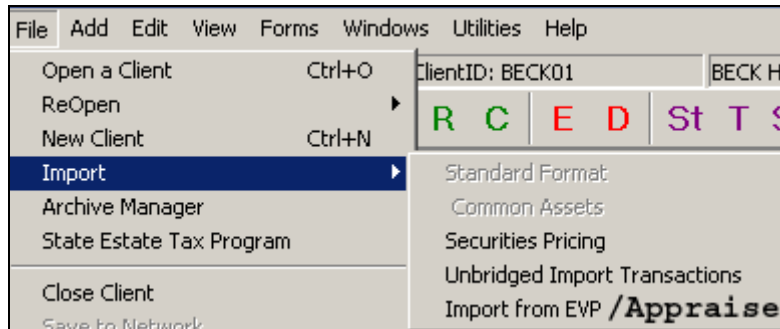
- Copy this Portfolio
- Delete this Portfolio
- Open another Portfolio
- Create a New Portfolio
- Convert to EZPrice
- Export Portfolio to FPS
- Exit

Buttons:

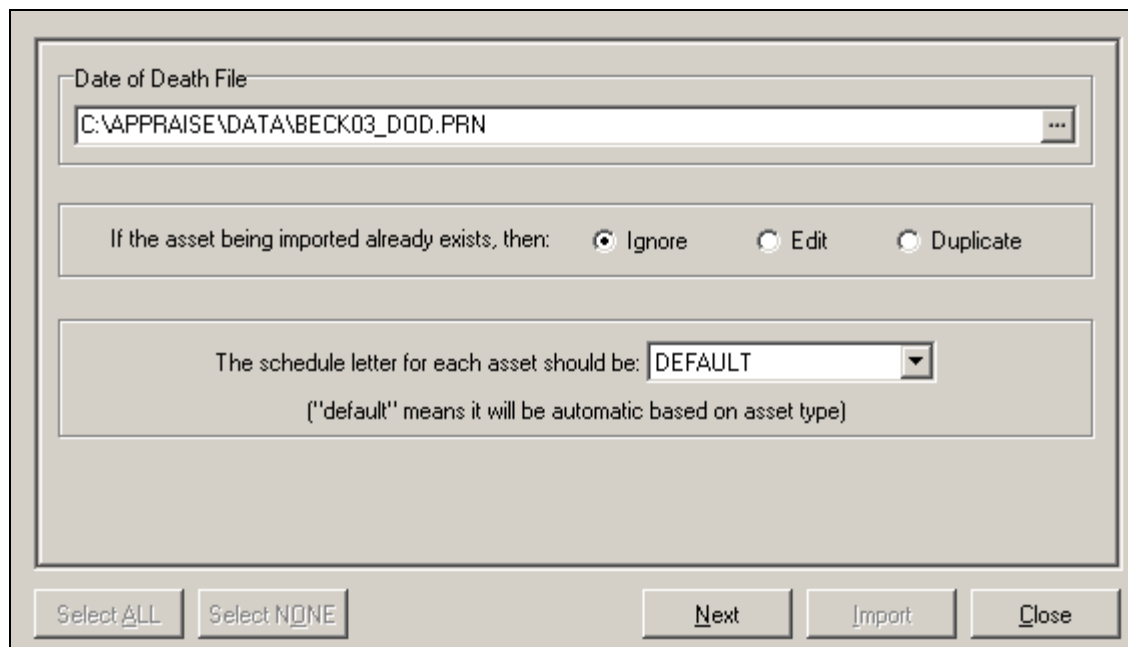
- Insert before the Selected Security
- Delete Selected Security
- Edit Selected Security
- Save Portfolio
- Main Menu
- Print Portfolio
- UnPrice Portfolio
- View Portfolio
- Price Portfolio
- Add Memo File

The export process has been completed; you should now exit Appraise and open your Fast-Tax FPS program. The export process has created an export file with a .prn file extension and is saved in the Appraise\data folder.

Open your existing client within the FPS program. From the file menu select Import and then Import from Appraise.



An Import Window will open. Enter or browse to the path to the export file. The filename of the export file has a .prn file extension and is located in the Appraise\data folder.



Follow the prompts within the FPS program to complete the Import process.